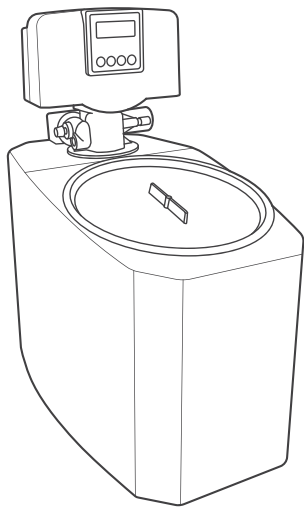




USER MANUAL



WATER SOFTENER

Model: 09351105
09351100



READ THIS USER MANUAL CAREFULLY BEFORE USING



TABLE OF CONTENTS

Introduction	3
Specifications	3
Features	4
Safety Guidelines	5
First Time Use	6
Installation	6
Operation	7
Programming Appliance	10
Cleaning and Maintenance	12
Guarantee	12



INTRODUCTION

Thank you for purchasing this product from Maxima. To ensure your own safety and to get the best out of your purchase, please read the instructions carefully before attempting to install or use this product.

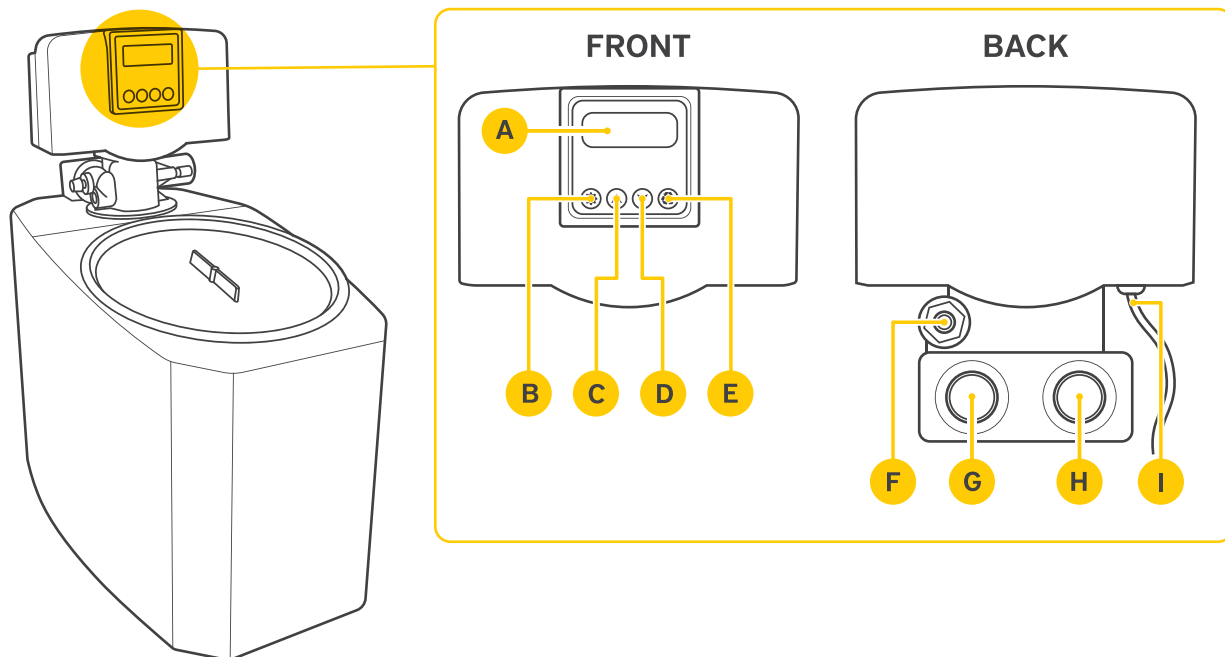
All Maxima products are manufactured with great care and are CE certified. As a result, our products meet the legal requirements regarding health, safety and the environment, as set out by the European Commission. In addition, all products are thoroughly tested prior to shipment to ensure product quality and safety.

Maxima is committed to offering the best products and service available. Customer satisfaction is our number one priority. We hope you enjoy using this product and thank you for choosing Maxima as your preferred supplier.

SPECIFICATIONS

Product: MAXIMA WATER SOFTENER

Model	Dimensions (cm)	Weight (kg)	Power consumption (A)	Electrical Input	Salt storage capacity (KG)	Operating pressure (Bar)
09351100	W23 x D40 x H45	10,5	0,1	230V / 50Hz 1 Phase	20	2-6
09351105	W31 x D50 x H54	12,5	0,1	230V / 50Hz 1 Phase	15	2-6




FEATURES

- A** Digital display
- B** Settings
- C** Increase value key
- D** Decrease value key
- E** Regeneration button
- F** Drain
- G** Untreated water outlet
- H** Treated water outlet
- I** Power supply


SAFETY GUIDELINES

This machine may only be used for the purpose for which it was designed and intended. The manufacturer and supplier are not liable for any damage caused by incorrect operation and improper use.

- This is a commercial product and must only be used by trained professionals who have read and fully understand this manual. It must not be used by children, or persons with reduced physical, sensory or mental capabilities without supervision.
- This device is intended for indoor use only.

 Keep the appliance and electrical plug away from water and other liquids. If either is exposed to a liquid, immediately disconnect the power supply and have the appliance checked by a certified technician. Not following these instructions may result in electric shock, or even death.

- Do not use the appliance after it has fallen or if is damaged in any way. Have it checked and repaired by a certified technician.
- Do not move the appliance while in operation and never move or carry the appliance by the power cord.

 Do not open the casing or try to repair the appliance yourself, unless instructed to by a Maxima technician. This may void the warranty, cause damage to the machine or result in a hazardous situation.

- Do not insert objects in the casing or openings of the appliance.
- Do not use any additional devices or accessories that are not supplied with the appliance or designed to work with the appliance.
- Never put your hands or other body parts near the moving parts of the appliance while operational and always keep an eye on the appliance when in use.
- Keep all packaging away from children and dispose of packaging in accordance with local and national regulations.
- Avoid overloading the appliance.
- The electrical installation must comply with the relevant regulations.
- Switch off the appliance before pulling the power plug out of the socket.
- Always disconnect the power supply when the appliance is not in use. To remove the plug from the socket, always pull the plug itself and not the cable.
- Do not touch the power plug with damp or wet hands.
- Keep the power cable away from the range of operation and do not cover the cable. Also make sure the power cable does not come in contact with hot or sharp objects and keep it away from open flames.

 Note that while the plug is in the electrical socket, the appliance is connected to the electric grid.



FIRST TIME USE

- Unpack and examine your product immediately after receiving it. If there are any latent defects or damage to the machine, contact your supplier immediately. Save all packaging materials in case the machine needs to be returned or inspected by the carrier.
- Remove any protective film from all surfaces (if applicable).
- Read this instruction manual in its entirety before attempting to install and operate this appliance. When in doubt, contact your supplier.
- Before using the appliance for the first time, it is recommended to properly clean it (See chapter "Cleaning and Maintenance").


INSTALLATION

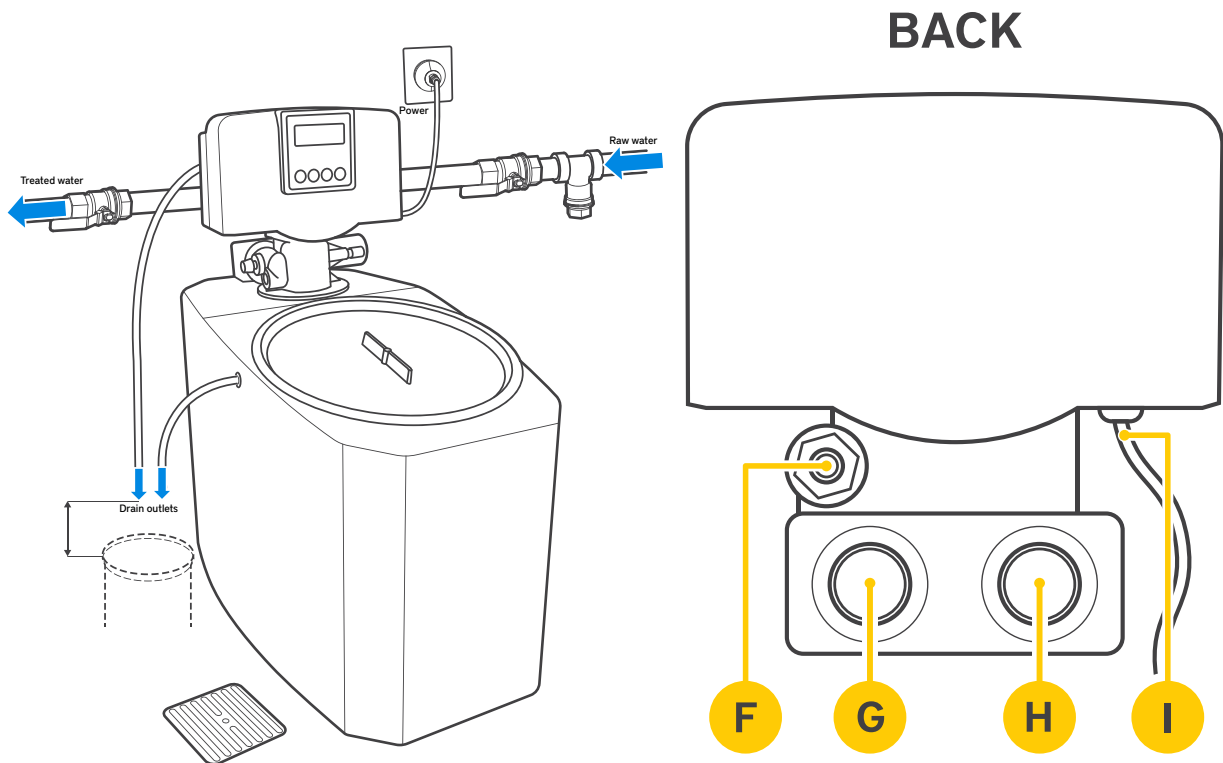
Water supplied to the device must comply with the local water regulations. The parts of the machine that are in contact with treated water must be made from material that is resistant to the DH levels (water hardness). Fill the brine tank with salt tablets more than half full before use.

- The appliance must be positioned on a flat and stable surface.
- Choose a surface where the appliance is not exposed to direct sunlight or close to a direct source of heat, such as a cooker, oven or radiator.
- When positioning the appliance, maintain a distance of 10cm (4") between the appliance and walls, or other objects, for ventilation and ease of use.
- Position the appliance in such a way that the plug is accessible at all times.
- Plug the power cord into a grounded and compatible socket.

PRODUCT REQUIREMENTS

- Water supply pipe $\frac{3}{4}$ " (cold water with pressure of at least 2 bar and less than 6 bar) with a cut off valve.
- Water temperature must not be higher than 30°C.
- Drainage at a maximum height of 10cm.
- Floor drainage must be in the room with a capacity to drain 20L per minute.
- A sediment filter should be installed before the water softener in order to avoid sediment in the water pipes from clogging the appliance.

 Salt tablets are not included with the appliance.



CONNECTION OVERVIEW

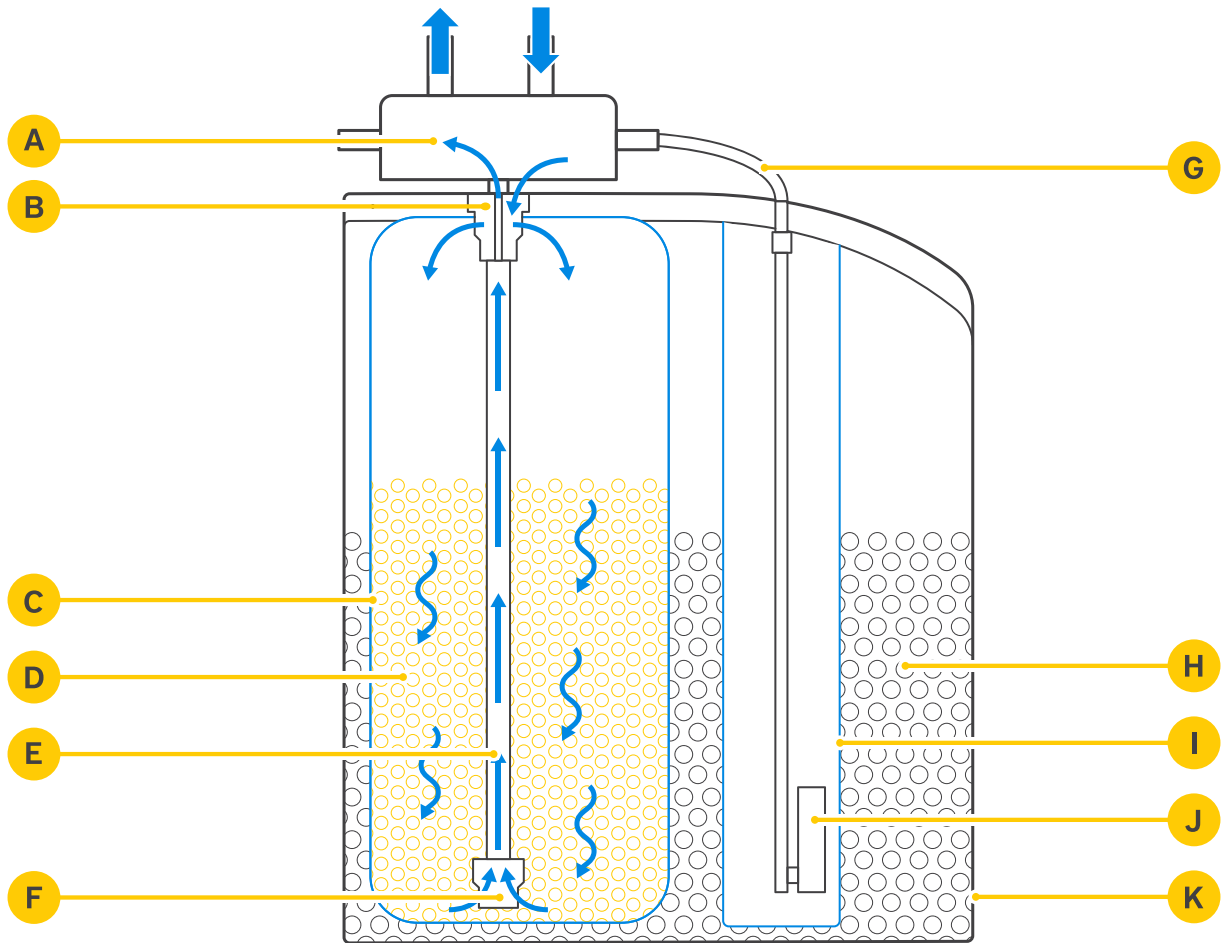
- Connect the inlet (G) and outlet (H) to the water supply.
- Connect the elastic 1/2" drain pipe to the drain outlet (F) then run the pipe to a drain.
- The sewage draining should be permeable enough to drain 20L per minute of the flushing water. The draining pipe should be stiff enough to avoid it breaking.
- Connect the plug to a grounded wall socket compatible with the specified power input on the appliance.

i Please find the circuit diagram in appendix A.

OPERATION

HOW DOES IT WORK

Hard water contains a combination of calcium (Ca), magnesium (Mg) and iron (Fe). The softening process facilitates the removal of these positively charged ions by means of ion-exchanged resin. When the ion-exchanged resin loses its effectiveness, a brine solution cleans the resin through a regeneration process.



OPERATIONAL DIAGRAM

- A** Control valve
- B** Upper basket 3/4"
- C** Resin tank
- D** Resin
- E** Central pipe 3/4"
- F** Lower basket
- G** Brine hose
- H** Salt tablets
- I** Brine well
- J** Safety brine valve
- K** Cabinet



REGENERATION

The regeneration removes the deposits using the salt tablet solution, which rinses out the absorbed calcium and magnesium ions into the sewage system.

Regeneration takes place automatically in intelligent mode (default). The user just has to programme the tested water hardness and the system will calculate its efficiency. The display will also show the amount of litres available before another regeneration cycle is necessary.

The regeneration process consists of 4 cycles:

Cycles (Abbreviation on display):

- 1 Backwashing (BW)
- 2 Brine and slow rinse (BD)
- 3 Fast rinsing (RR)
- 4 Refilling (SR)

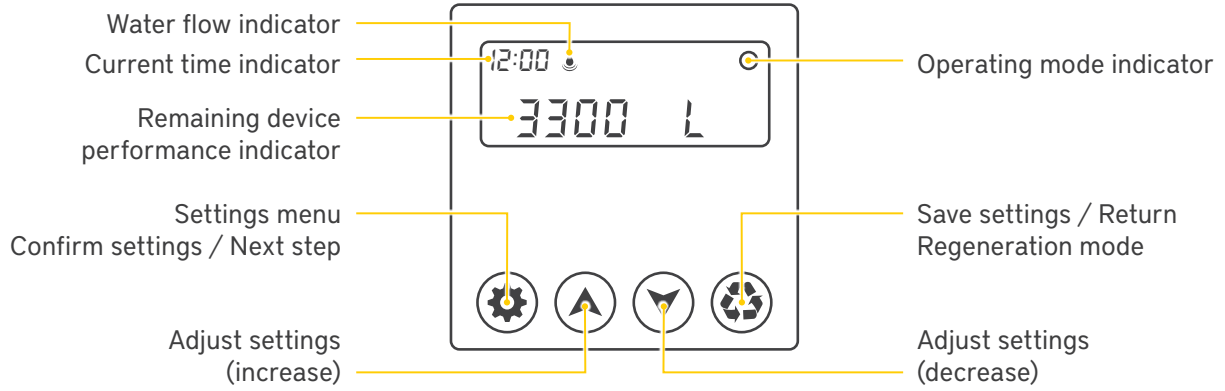
WATER HARDNESS CAPACITY TABLE

English Degree	French Degree	PPM	DH Degrees	System Efficiency
12,5	18,0	178,6	10	2400L / Regen
13,8	19,8	196,5	11	2182L / Regen
15,0	21,6	214,3	12	2000L / Regen
16,3	23,4	232,2	13	1846L / Regen
17,5	25,2	250,0	14	1714L / Regen
18,8	27,0	267,9	15	1600L / Regen
20,0	28,8	285,8	16	1500L / Regen

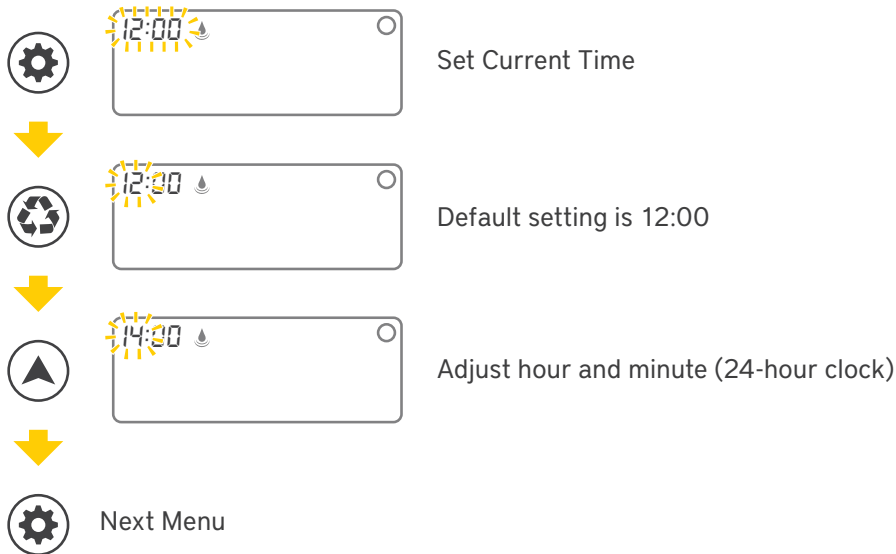
The stated capacities were calculated based on standard application and machine conditions. This information may vary according to external influencing factors (for example: fluctuating water quality).

PROGRAMMING APPLIANCE

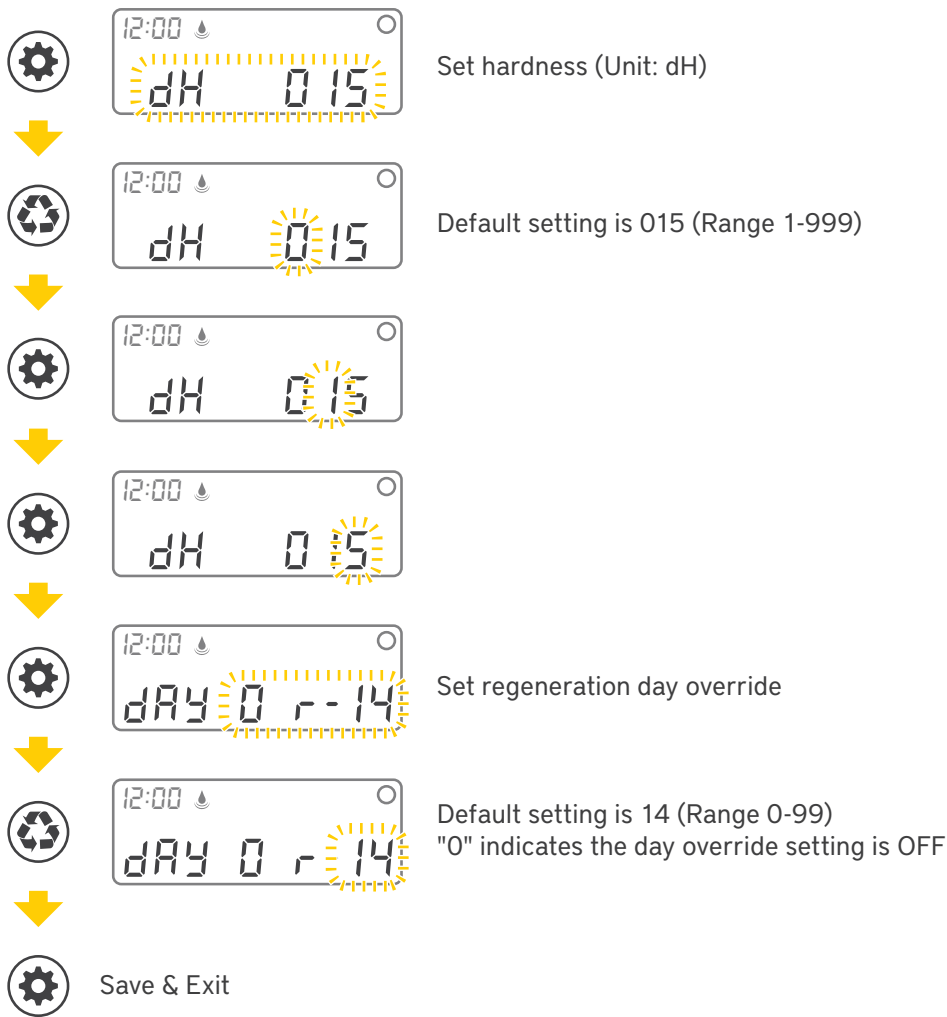
DISPLAY DESCRIPTION



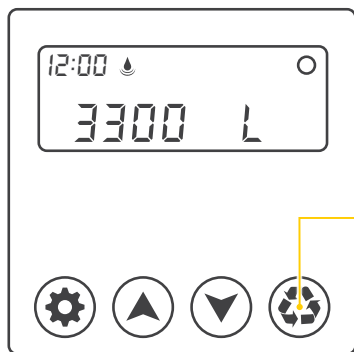
CURRENT TIME SETTING



THE WATER HARDNESS AND REGENERATION OVERRIDE:



MANUAL REGENERATION:



- Single press initiates regeneration at a specified time
- Press and hold (5-6 sec.) – immediate regeneration initiation



CLEANING AND MAINTENANCE

- Maintenance and repairs should only be done by a certified technician.
 - Regularly check and clean the machine, its parts and accessories.
 - Inspect the brine tank at least once a month. Make sure to keep the salt level above the halfway mark.
 - Regularly check the power plug and power cable for damage. If either is damaged, do not use the machine. Instead, have it repaired by a certified technician.
 - Remove the tassels for cleaning and dry separately.
 - Always switch off and disconnect the power supply before cleaning or maintenance.
 - Follow the food safety guidelines when cleaning machines and tools used in the food industry.
- ⚠ Never use aggressive cleaning agents or abrasives. Do not use solvents or petrol-based cleaning agents. Some cleaning agents may leave harmful residue or cause damage to the machine. Use a food-safe cleaning product instead.
- ⚠ Do not use a scourer or any sharp objects during cleaning as this may cause damage to the machine.
- ⚠ Never hose down the machine or immerse it in water or any other liquid. Do not use a steamer to clean the machine.
- ⚠ Never let the power cable or power plug get wet.
- Clean the appliance using a soft, damp cloth with water and a mild detergent..

GUARANTEE

We offer a 12 month warranty from the date of purchase, as indicated on your purchase invoice.

Under the warranty, we will deliver additional spare parts in case of: material defects, manufacturing defects or other quality issues. This only relates to the correct use of the product and for original parts only.

The following is not covered by the warranty:

- 1 Damage due to transportation or incorrect installation and connection.
- 2 Component damage caused by incorrect electrical or water connection.
- 3 Damage as a result of disassembly and/or modification to the original machine without permission.
- 4 Damage as a result of misuse, poor cleaning or improper maintenance.
- 5 Damage as a result of fire, building collapse, lightning, flooding, power surges, vermin or other events.
- 6 Failure to read or follow the user manual.
- 7 Consumables and parts prone to wear and tear.
- 8 An altered invoice or no invoice.

For the purpose of product development and improvement, we reserve the right to; change the product, packaging, or documentation without prior notice.



WWW.MAXIMAKITCHENEQUIPMENT.COM
INFO@MAXIMAHOLLAND.COM
+31 (0) 297 253 969

OFFICE & SHOWROOM:

NIJVERHEIDSWEG 19F
3641 RP MIJDRECHT
THE NETHERLANDS

**SPARE PART WAREHOUSE &
TECHNICAL SERVICE DEPARTMENT:**

NIJVERHEIDSWEG 23C
3641 RP MIJDRECHT
THE NETHERLANDS